

ROTATIONAL APPLICATION | QUOTE REQUEST FORM

Date _____ Address _____
 Company Name _____ City _____ State/Prov. _____
 Contact _____ Country _____ Zip/Postal Code _____
 Quantity _____ Telephone _____ Fax _____
 Email _____

1. Quote For

New Design: Specify Gortrac® Part Number: _____ Dynatect Recommendation* (*please provide design data)
 Existing Design: Brand: _____ Part #: _____ Length: _____ Drawing Provided?
 Comments: _____

2. Cables/Hoses

List type of cable(s) and/or hose(s) below.

TYPE OF CABLE/HOSE	OUTSIDE DIAMETER	QUANTITY	MINIMUM BEND RADIUS	WEIGHT/FOOT	COMMENTS

If dimensions A, B, C and D are left blank, Dynatect will determine the correct carrier sizing based on the cables/hoses specified above.

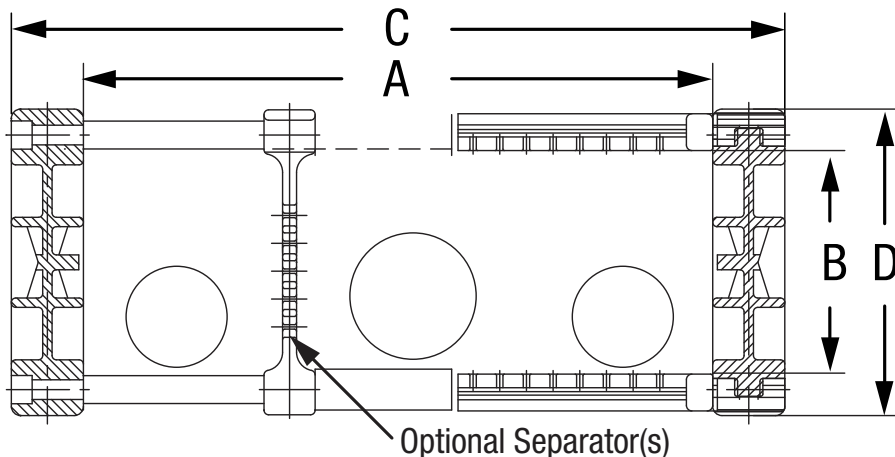
A = Cavity Width: _____
 (determined by adding the outer diameters of all cables/hoses + appropriate safety factors and divider/separator widths)

B = Cavity Height: _____
 (determined by the outer diameter of the largest cable/hose + safety factor)

C = Outer Width: _____
 (please specify any space restrictions)

D = Outer Height: _____
 (please specify any space restrictions)

Cable/Hose Safety Factor:
 Cables: +10% Hoses: +20%
 Separators? Yes No (Quantity: _____)

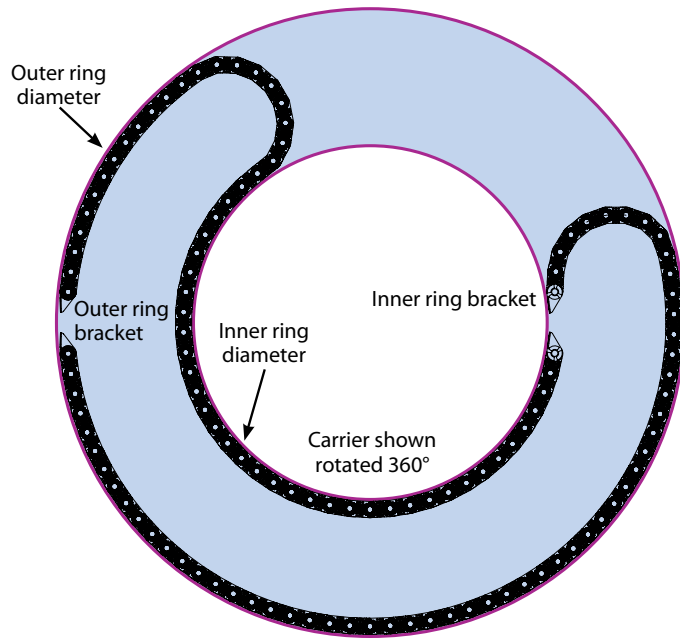


Total ideal fill for Diminsion B: 60% including Safety Factors

ROTATIONAL APPLICATION | QUOTE REQUEST FORM

3. Travel Requirements

- Degrees of Travel: _____
 Inner Ring Diameter: _____
 Outer Ring Diameter: _____
 Location of Fixed End:
 Inner Ring
 Outer Ring
 Will Fixed End Be in Center of Rotation?
 Yes
 No (Offset in Degrees from Center: _____)



5. Application

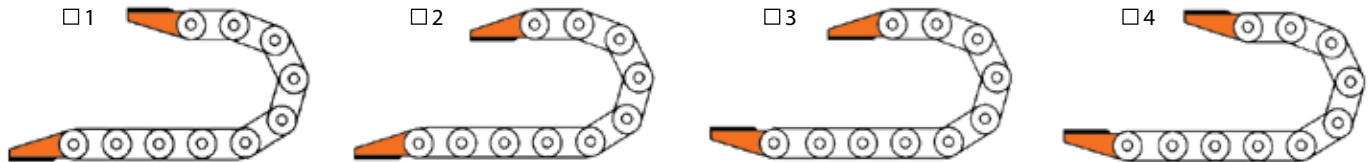
Operating Temperature Range: Ambient: _____ Minimum: _____ Maximum: _____
 Describe Operating Environment (debris, moisture, chemicals, etc.): _____

Application Details: _____

Material Preference: Steel Plastic No Preference Other: _____

6. Bracket Configuration

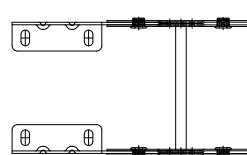
Note: Default bracket configuration is #1-Inward.



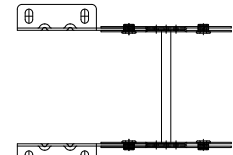
Mounting Holes Inward or Outward of Link:

Fixed End: In Out Moving End: In Out

Non-Standard Mounting Brackets (provide drawing)



Brackets Inward



Brackets Outward